

Fleetwood-Seneca High-Grade Polymetallic Project



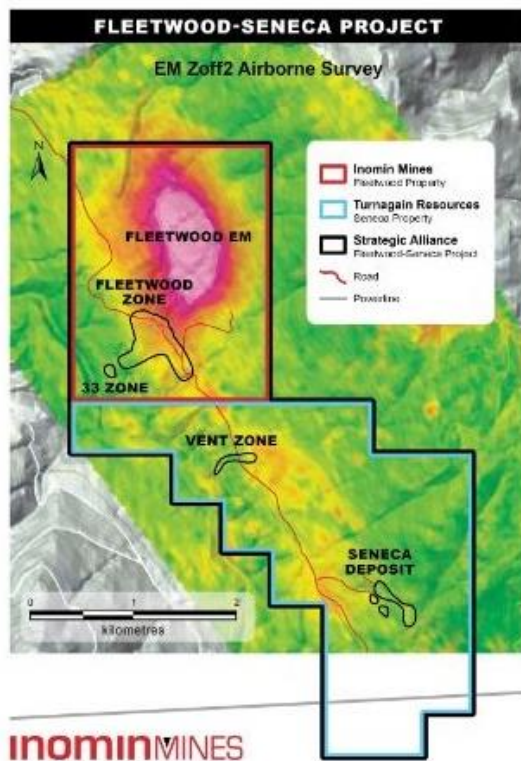
inominMINES
TSX.V-MINE

VMS Project Available

- Zinc-Copper-Gold-Silver Deposit
- Multiple Exploration Targets
- Southwestern British Columbia

www.inominmines.com

About the Project



Fleetwood is a 100% Inomin owned zinc-copper-silver-gold Volcanogenic Massive Sulphide (VMS) project located in southwestern British Columbia.

The Fleetwood project is located at the northern extension of a 6 km by 2 km northwest trending structure hosting extensive Kuroko style zinc-copper-silver-gold rich VMS mineralization. Exploration in the belt has discovered the Seneca zinc-copper-silver-gold deposit, the partially-delineated Fleetwood, 33 and Vent zones, and several priority exploration targets. These mineral areas are typical of VMS districts where deposits commonly occur in clusters.

Inomin has formed a strategic alliance to consolidate the district to enhance the exploration and development attractiveness of the region. Several untested areas within the enlarged project area provide multiple opportunities to discover new VMS deposits. The project is available for joint venture.

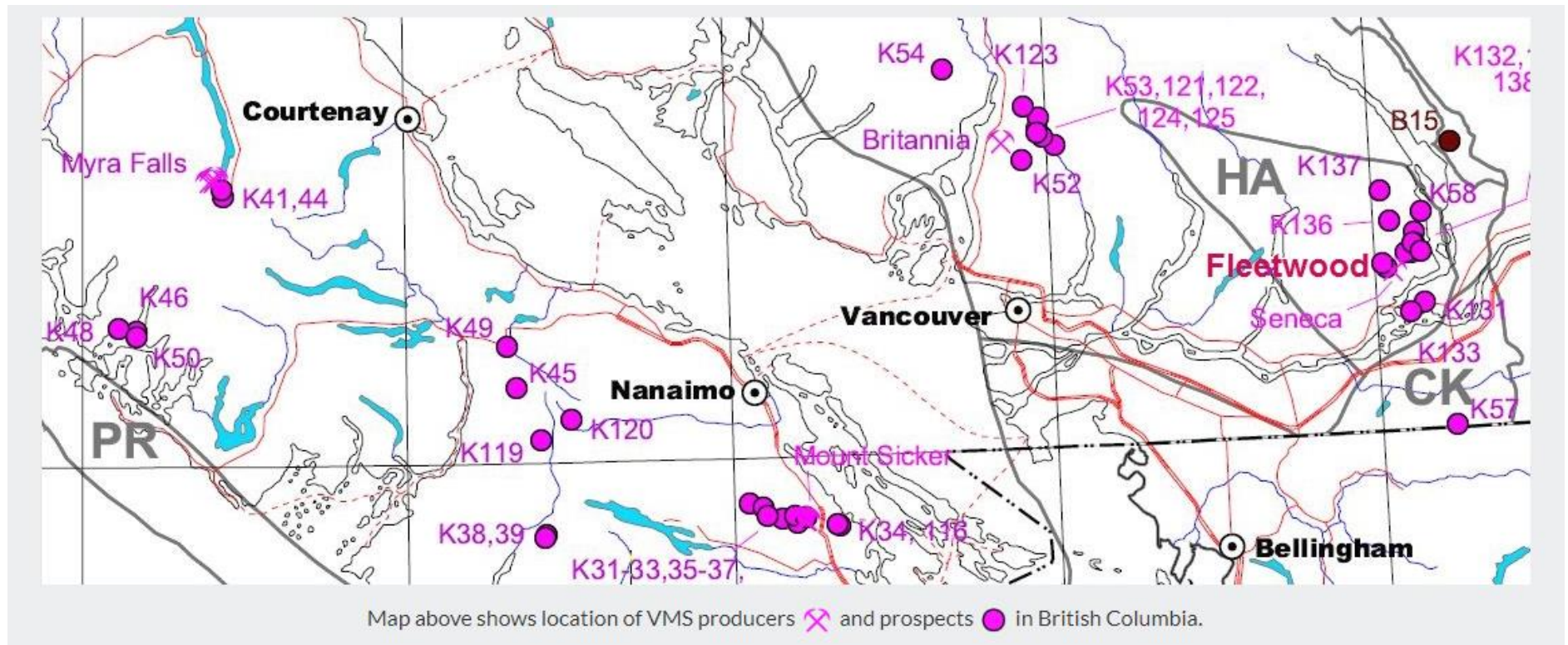


Location



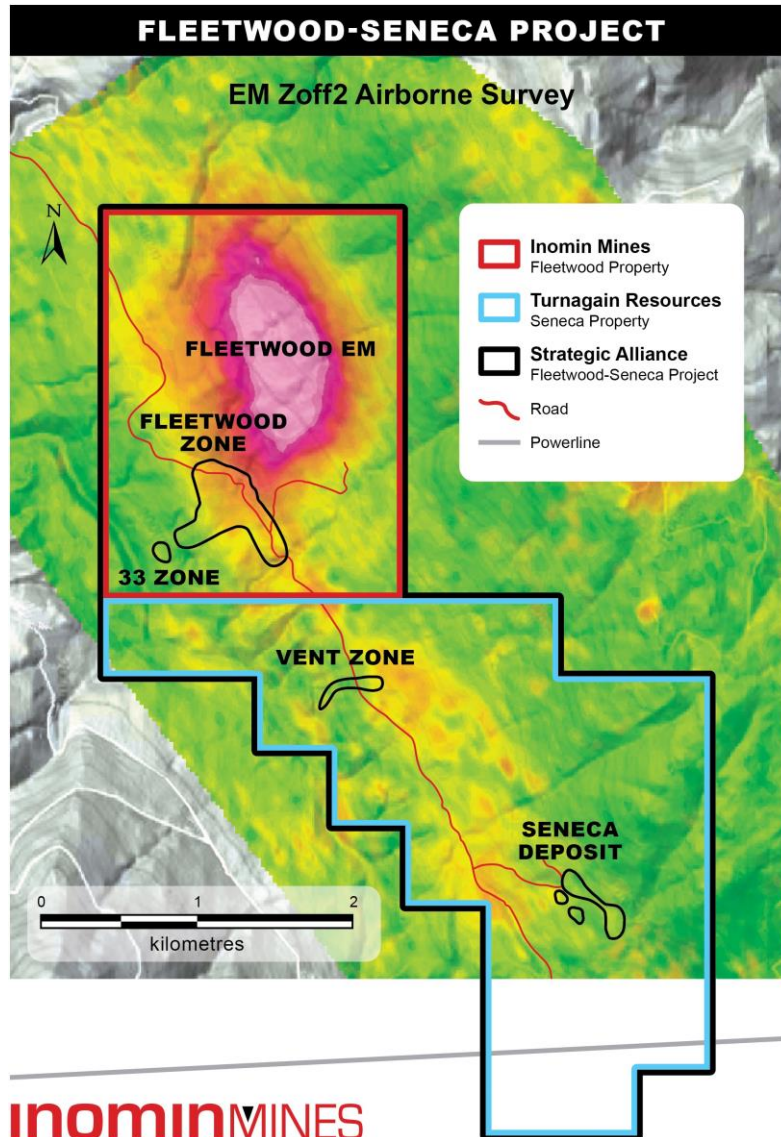
90 kilometres East of Vancouver, Canada, accessible by highway and roads in 2 hours.

VMS Producers and Prospects in BC



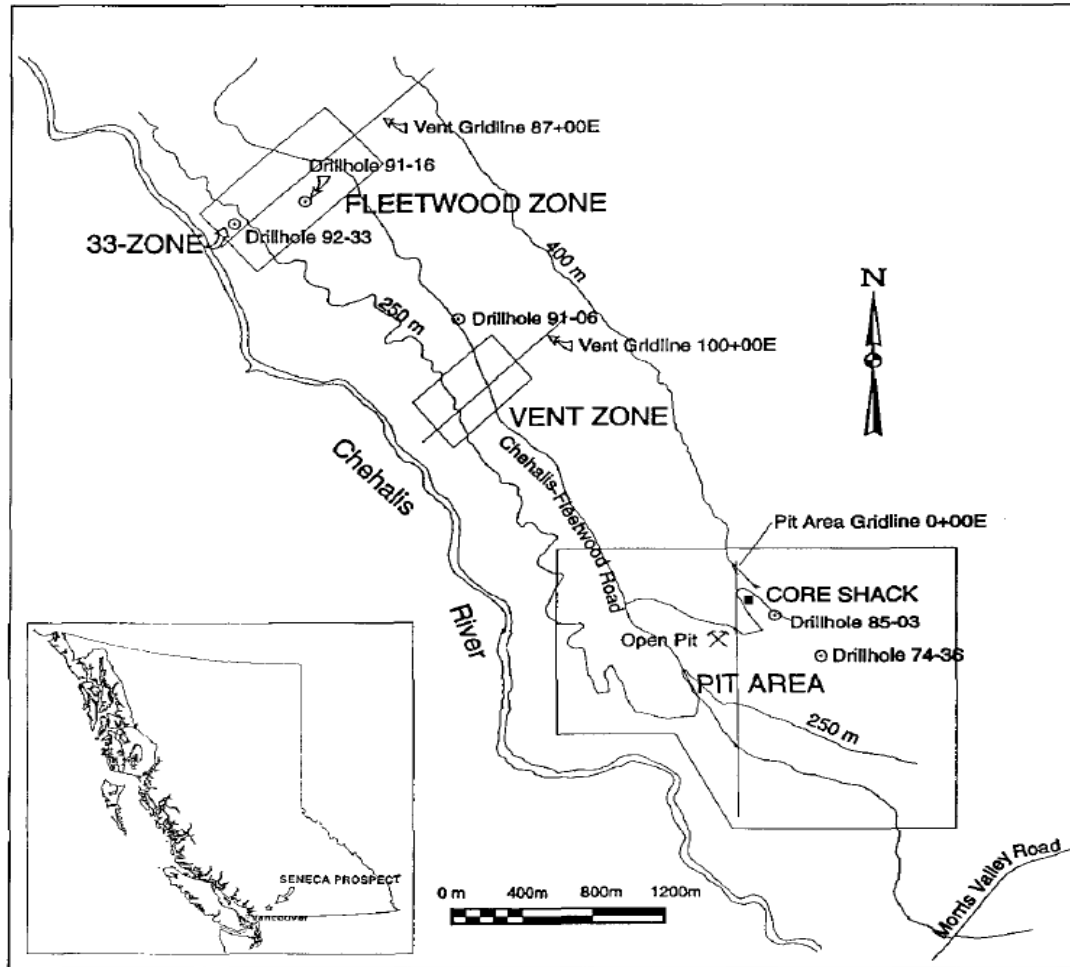
Seneca-Fleetwood is situated in a proven VMS district with excellent access and infrastructure. The Seneca deposit had limited production with ore processed at the former operating Britannia VMS mine north of Vancouver.

Deposit and Multiple Exploration Targets



- Inomin has formed a strategic alliance to consolidate the Fleetwood-Seneca properties.
- 6 km long VMS camp with Seneca deposit and multiple exploration targets including Fleetwood, 33 and Vent zones.
- Advance-stage exploration project with over 30,000 metres of diamond drilling.
- Drilling has discovered high-grade (up to 32% zinc) VMS mineralization.

Seneca Open Pit and Main Zones



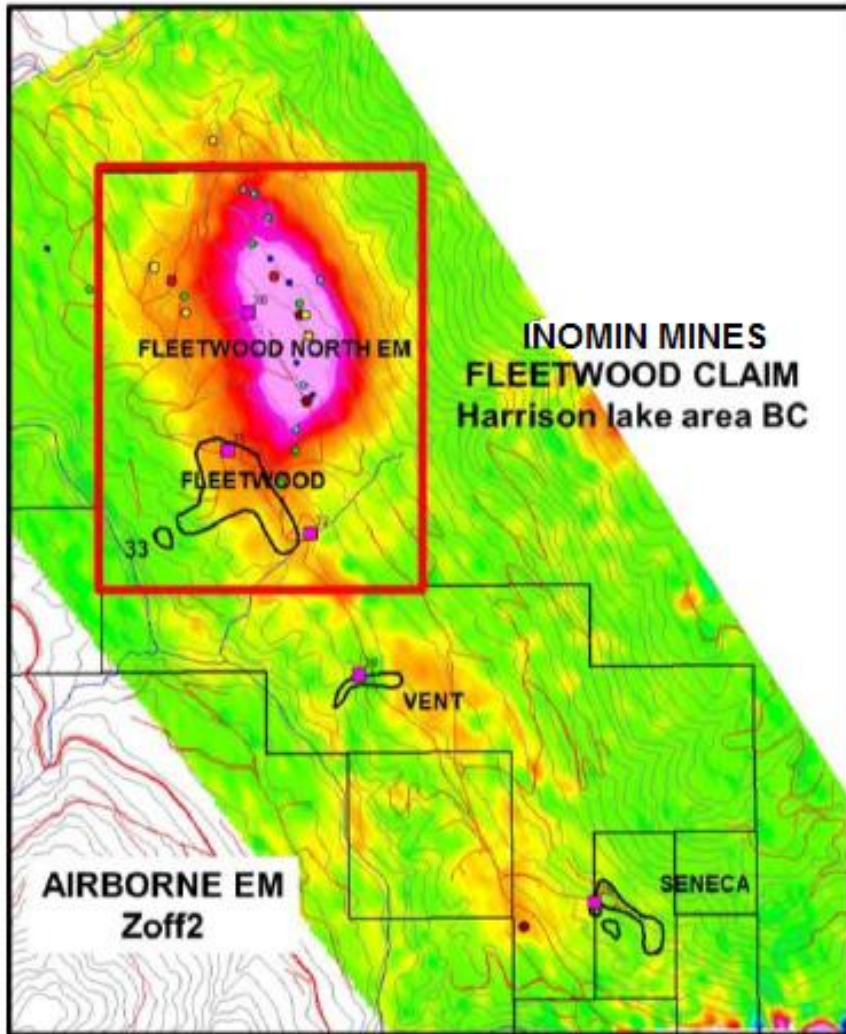
Seneca pit contains 1.5 million tonnes grading 3.57% zinc, 0.63% copper, 0.15% lead, 41.1 g/t silver and 0.8 g/t gold according to a 1984 report by Wright Engineers.*



Drill core fragment showing fine disseminated pyrite with chlorite and epidote, typical of propylitic alteration.

** Note this report is not available and a qualified person has done enough work to classify this estimate as current mineral resources or mineral reserves. This estimate cannot be considered as reliable since it is unknown whether or not it was prepared by a qualified person. In addition, resource categories are not mentioned and assumptions, parameters and methods used to prepare it are not known. There is no known more recent estimate, and much additional drilling would be needed to verify such an estimate. The only relevance herein is strictly as geological information. This historical estimate is not considered current or as an indication of what might be found on the Fleetwood-Seneca project claim holdings. A qualified person has not done sufficient work to classify the historical estimate as a current mineral resource and is not treating the historical estimate as a current mineral resource.*

Fleetwood Exploration Targets



Exploration drilling at the Fleetwood property has discovered three exploration targets: the Fleetwood and 33 zones, and the Fleetwood North EM.

The Fleetwood zone was discovered in 1991 by MINNOVA Inc. that found precious metal rich VMS mineralization up to 30 metres thick. Including the high-grade 33 zone (23% Zn), the mineralized area measures 800 m by 700 m.

Wide-spaced drilling at the Fleetwood zone (200 m centres) leaves ample room for the occurrence of other mineralized bodies, similar to the deposits at the Myra Falls VMS mine.

Select Drill Results

Seneca Deposit

| Drill Hole | Min. Type | Interval m | Zinc % | Copper % | Lead % | Silver g/t | Gold g/t |
|------------|-----------|------------|--------|----------|--------|------------|----------|
| DDH-71-6 | Massive | 7.30 | 9.15 | 1.01 | 0.01 | 84.60 | 2.82 |
| DDH-74-31 | Massive | 5.00 | 11.28 | 0.64 | 0.66 | 125.10 | 0.90 |
| DDH-83-6 | Massive | 1.30 | 17.70 | 5.11 | 0.04 | 144.30 | 6.96 |
| DDH-85-3 | Massive | 0.65 | 10.10 | 0.36 | 0.72 | 233.90 | 5.41 |

Fleetwood Zone

| Drill Hole | Min. Type | Interval m | Zinc % | Copper % | Lead % | Silver g/t | Gold g/t |
|------------|-----------|------------|--------|----------|--------|------------|----------|
| DDH-91-16 | Massive | 1.10 | 5.56 | 0.38 | 0.37 | 162.00 | 2.37 |
| | Stockwork | 32.10 | 2.06 | 0.31 | 0.11 | 8.10 | 0.07 |
| DDH-91-10 | Massive | 1.35 | 13.77 | 0.84 | 0.42 | 28.90 | 0.65 |
| | Stockwork | 13.60 | 2.25 | 0.20 | 0.04 | 12.00 | 0.07 |
| DDH-87-12 | Massive | 0.46 | 6.45 | 0.47 | 3.04 | 326.00 | 2.29 |
| | Stockwork | 13.90 | 2.03 | 0.10 | 0.45 | 21.00 | 0.34 |
| DDH-91-18 | Stockwork | 8.24 | 5.74 | 0.79 | 0.10 | 7.50 | 0.07 |

Select Drill Results

33 Zone

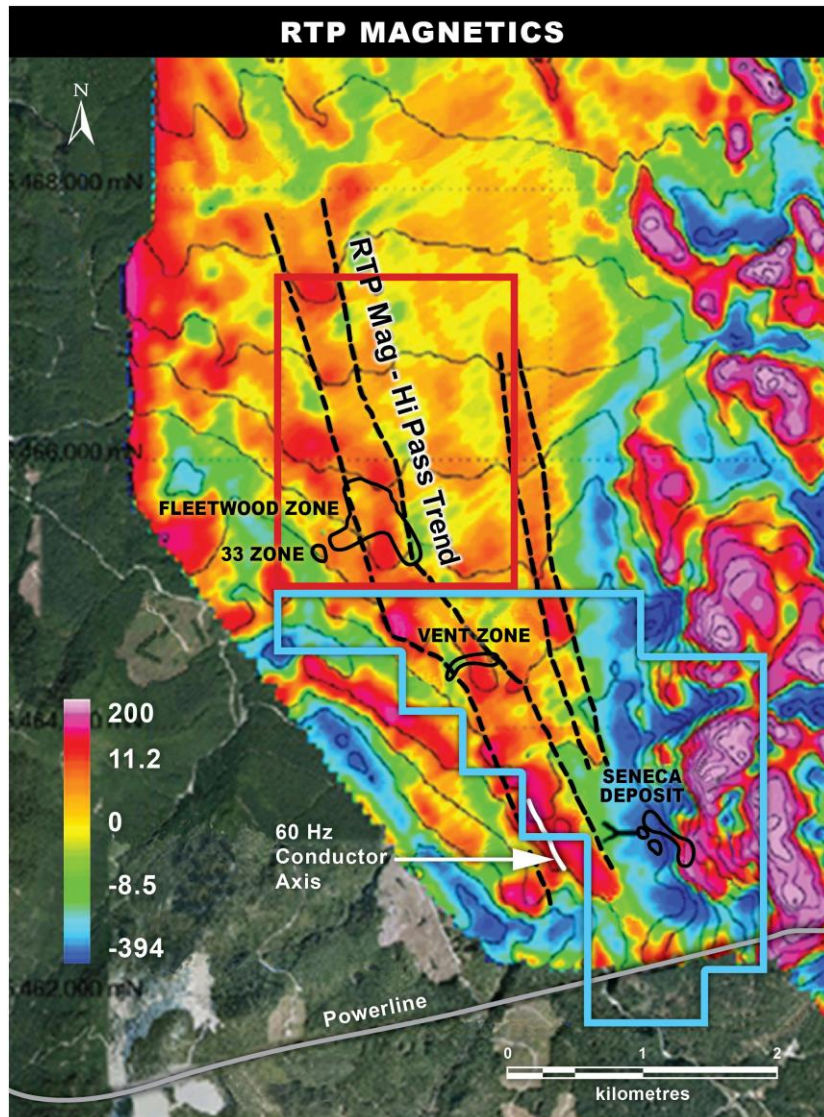
| Drill Hole | Min. Type | Interval m | Zinc % | Copper % | Lead % | Silver g/t | Gold g/t |
|------------|-----------|------------|--------|----------|--------|------------|----------|
| DDH-92-33 | Massive | 3.20 | 23.30 | 1.83 | 1.71 | 133.00 | 2.33 |

Vent Zone

| Drill Hole | Min. Type | Interval m | Zinc % | Copper % | Lead % | Silver g/t | Gold g/t |
|------------|-----------|------------|--------|----------|--------|------------|----------|
| DDH-85-09 | Stockwrk | 12.50 | 3.29 | 0.50 | 0.11 | 13.10 | 0.12 |
| DDH-85-12 | Stockwrk | 9.60 | 3.84 | 0.25 | 1.20 | 28.80 | 0.73 |

Note although exploration at Fleetwood-Seneca was carried out by reputable companies, it was not done under the supervision of a qualified person, nor has a qualified person verified the data. The only relevance herein is strictly as geological information.

Airborne Magnetic Survey



An airborne magnetic survey reveals two distinct northwest trending magnetic high trends (dashed black lines).

The major western trend cuts through the Fleetwood and Vent zones, and to an area approximately 800m west of the main Seneca Pit.

The white solid line is a possible EM conductor. The source of this conductor/magnetic high susceptibility anomaly is not known.

High Potential for Additional Deposits

Fleetwood-Seneca has significant potential for discovery of several additional massive sulphide bodies to build resources beyond the Seneca deposit. Mineralization is similar to the Myra Falls VMS deposits on Vancouver Island. Following are five priority exploration targets.

1. Northeast of the Seneca deposit an 800m by 800m area contains no drill holes and is bounded by mineralized intercepts.
2. Between the Seneca and the Vent zones a 500m by 500m area containing an EM anomaly remains untested.
3. A similar 500m gap in the drilling to the northwest of the Vent and southeast of the Fleetwood contains a low intensity magnetic anomaly,
4. The wide spaced drilling of the Fleetwood zone (200m centers) leaves ample room for the occurrence of Battle or Gap style mineralization (Myra Falls), and
5. Surveys on the Seneca zone demonstrate IP responds well to identifying mineralization. A DC-IP survey is recommended at the large Fleetwood North EM anomaly to delineate this feature and conduct further exploration.

Contact

For acquisition, JV, or other
business opportunities contact:

John Gomez
President
Inomin Mines Inc.
info@inominmines.com
<https://inominmines.com/>



inominMINES
TSX.V-MINE