



ADVANCING GREAT DISCOVERIES

# Disclaimer

This presentation contains 'forward-looking statements' as defined or implied at common law and within the meaning of the Corporations Law. Such forward-looking statements may include, without limitation, statements with respect to Inomin Mines Inc.'s (the "Company") objectives and strategies, as well as statements with respect to (i) future property acquisitions; (ii) statements regarding future exploration; and (iii) plans implying future capital expenditures.

Where the Company or any of its officers or directors or representatives expresses or implies an expectation or belief as to future events or results, such expectation or belief is expressed in good faith and the Company or its officers or representatives as the case may be believe to have a reasonable basis for implying such an expectation or belief. However, forward-looking statements are subject to risks, uncertainties and other factors, which could cause actual results to differ materially from future results expressed, projected or implied by such forward-looking statements. Such risks include, but are not limited to, magnesium, nickel, gold, silver, and other metals' price volatility, COVID-19 and/or other adverse pandemics, increased exploration and operating costs, political and operational risks in the countries in which the Company operates, and governmental regulation and judicial outcomes.

The Company does not undertake any obligations to publicly release revisions to any 'forward looking statement', to reflect events or circumstances after the date of this release, or to reflect the occurrence of unanticipated events, except as may be required under applicable securities laws.

All technical results on the La Gitana, Pena Blanca, and select results on the Beaver-Lynx properties reported herein, is information disclosed publically by past owners of the properties. The reliability of historical results is uncertain but considered to be relevant by Company management, however, there is a risk that any future confirmation work and exploration may produce results that substantially differ from the historical results.

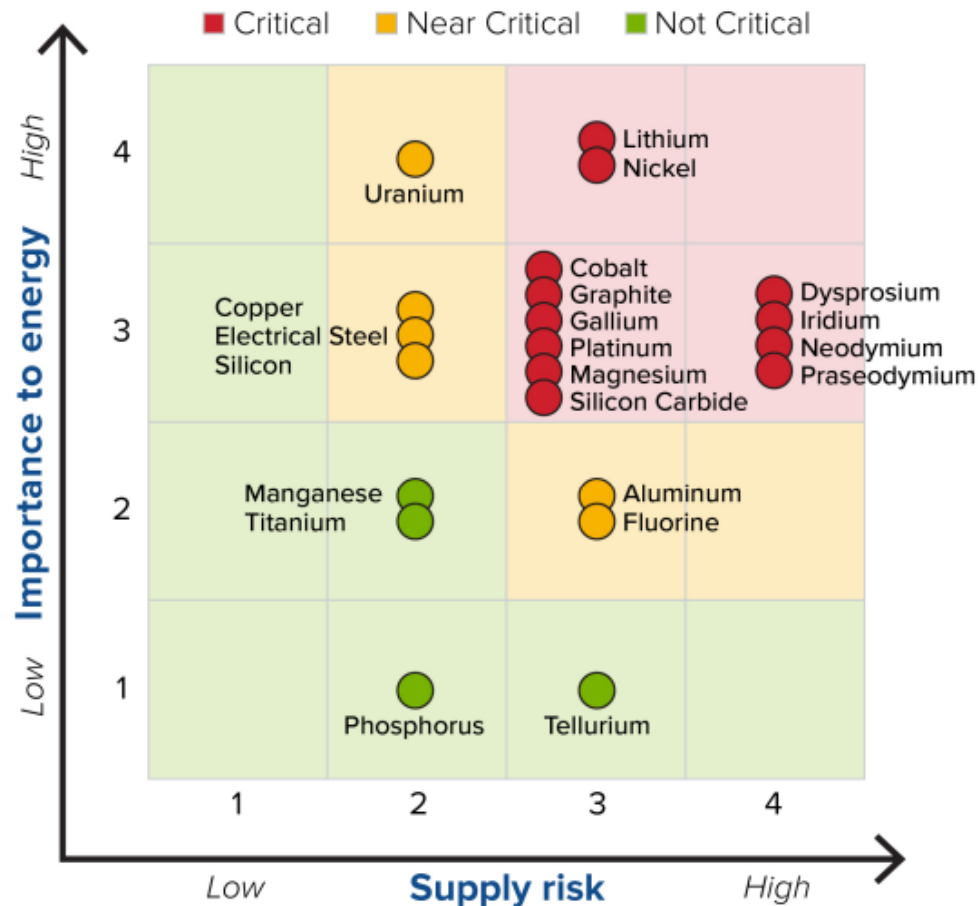
L. John Peters, P.Geo., a Qualified Person under the meaning of Canadian National Instrument 43-101, is responsible for the technical information in this presentation.

# Why Own **MINE**?

- Exposure to significant **magnesium-nickel-chromium-cobalt** (critical minerals) and **gold-silver** discoveries
- Major magnesium-nickel drilling discovery at Beaver property – along 6 km strike – including **252 metres grading 20.6% magnesium and 0.16% nickel**
- Strong potential to delineate **substantial magnesium-nickel resources** at Beaver; Lynx area is geologically similar with even **larger mineral targets**
- Further drilling planned to **enlarge discoveries** at Beaver-Lynx
- La Gitana hosts a significant **gold-silver deposit** open to expansion

# US Material Importance and Supply Risk

MEDIUM TERM 2025-2035

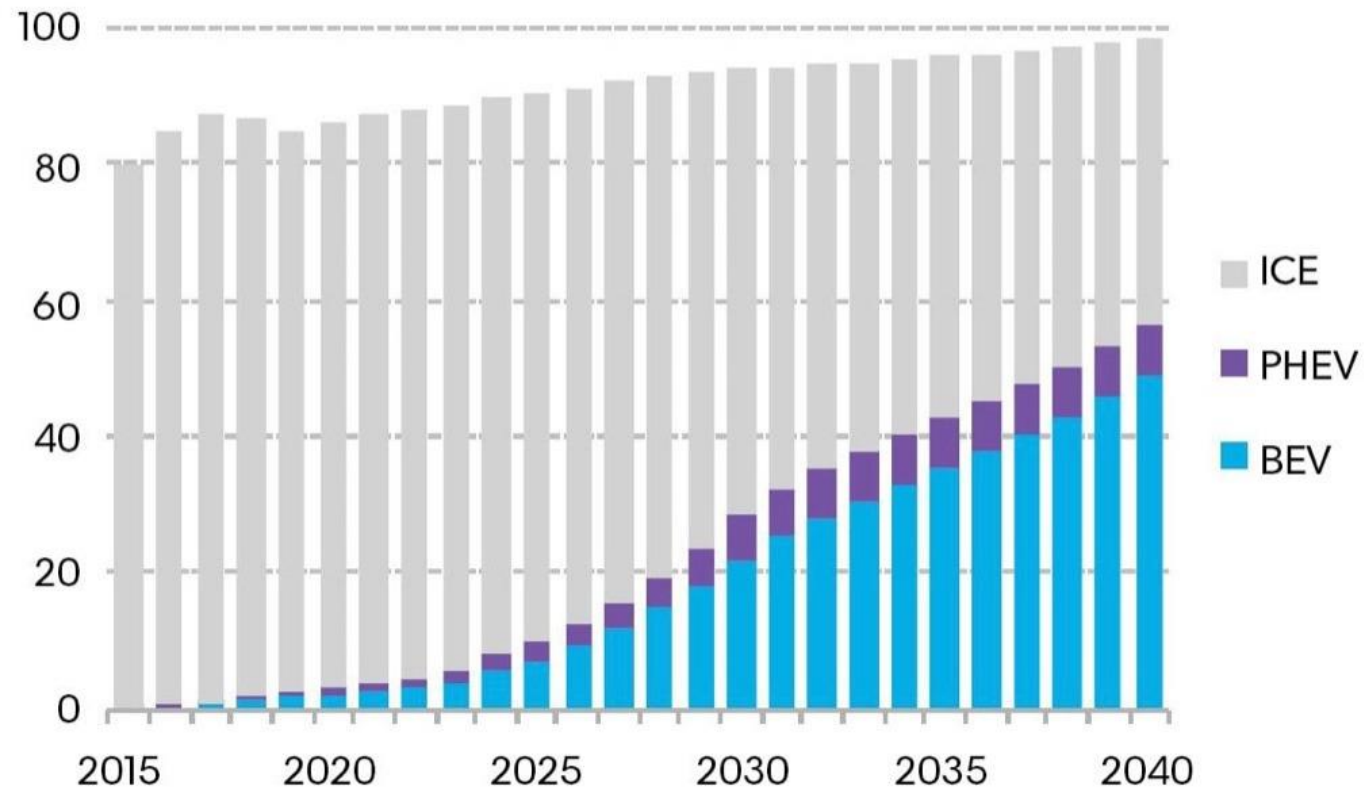




# Paradigm Shift to Cleaner Energy Including EVs Powering Critical Minerals Demand

Global long-term passenger vehicle sales by drivetrain

Million vehicles



Source: BloombergNEF

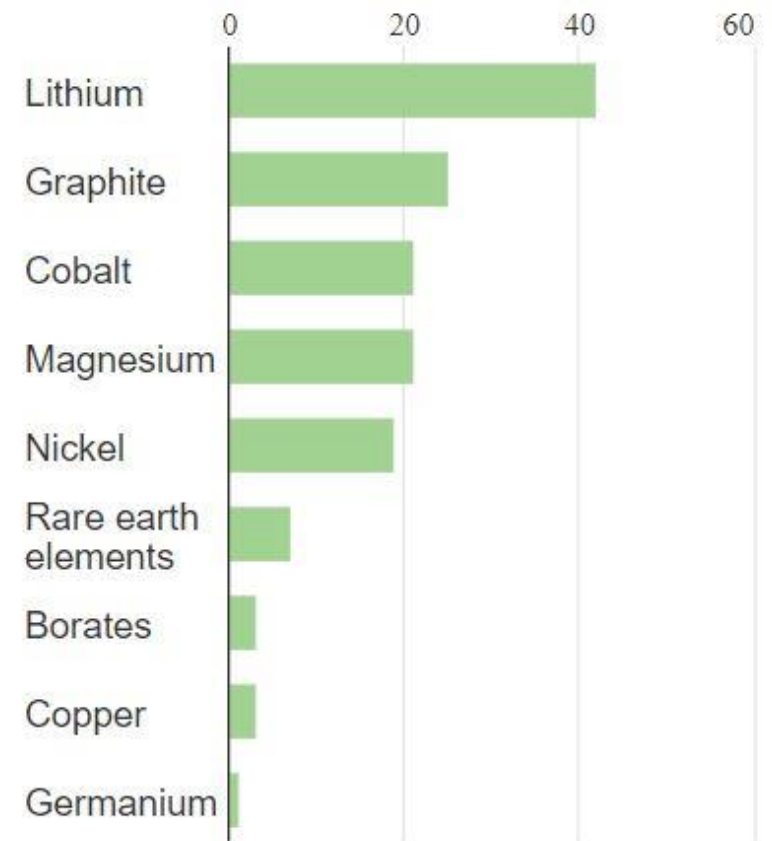
# Massive Growth for Select Critical Minerals



*Demand for many critical minerals are forecast to soar in the coming decades as the world transitions to cleaner energy*

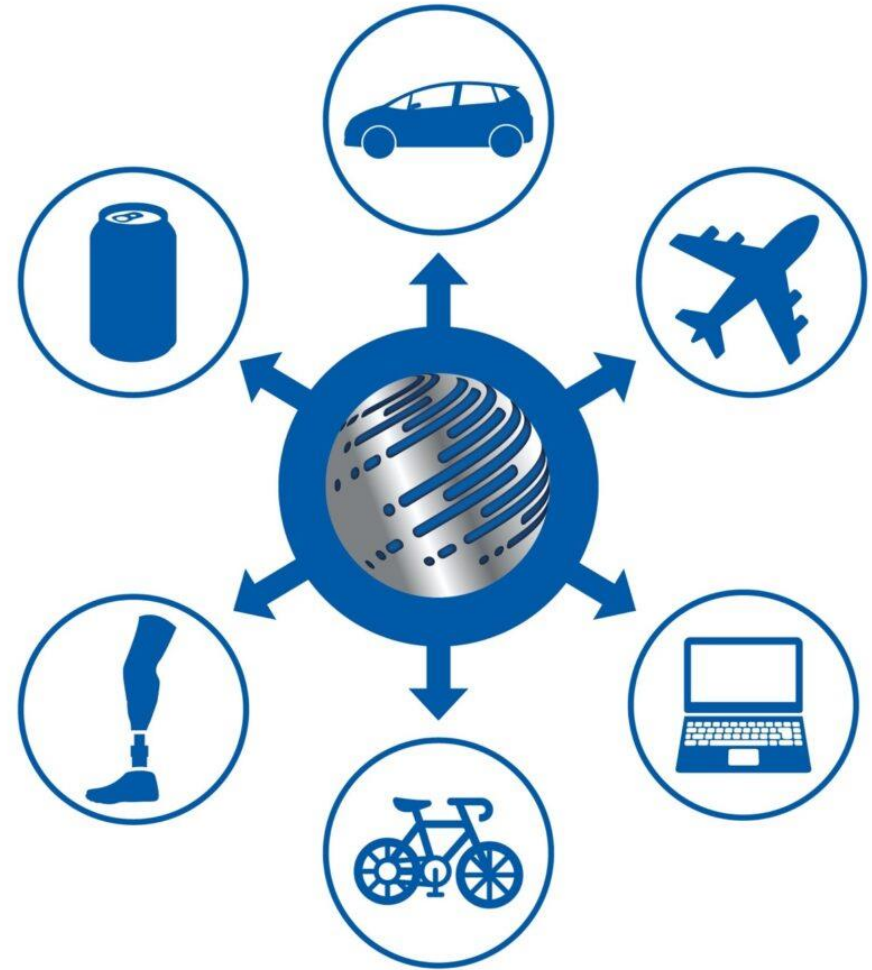
## Projected Growth in Global Demand by 2040

Projected increase factor (1=current demand)



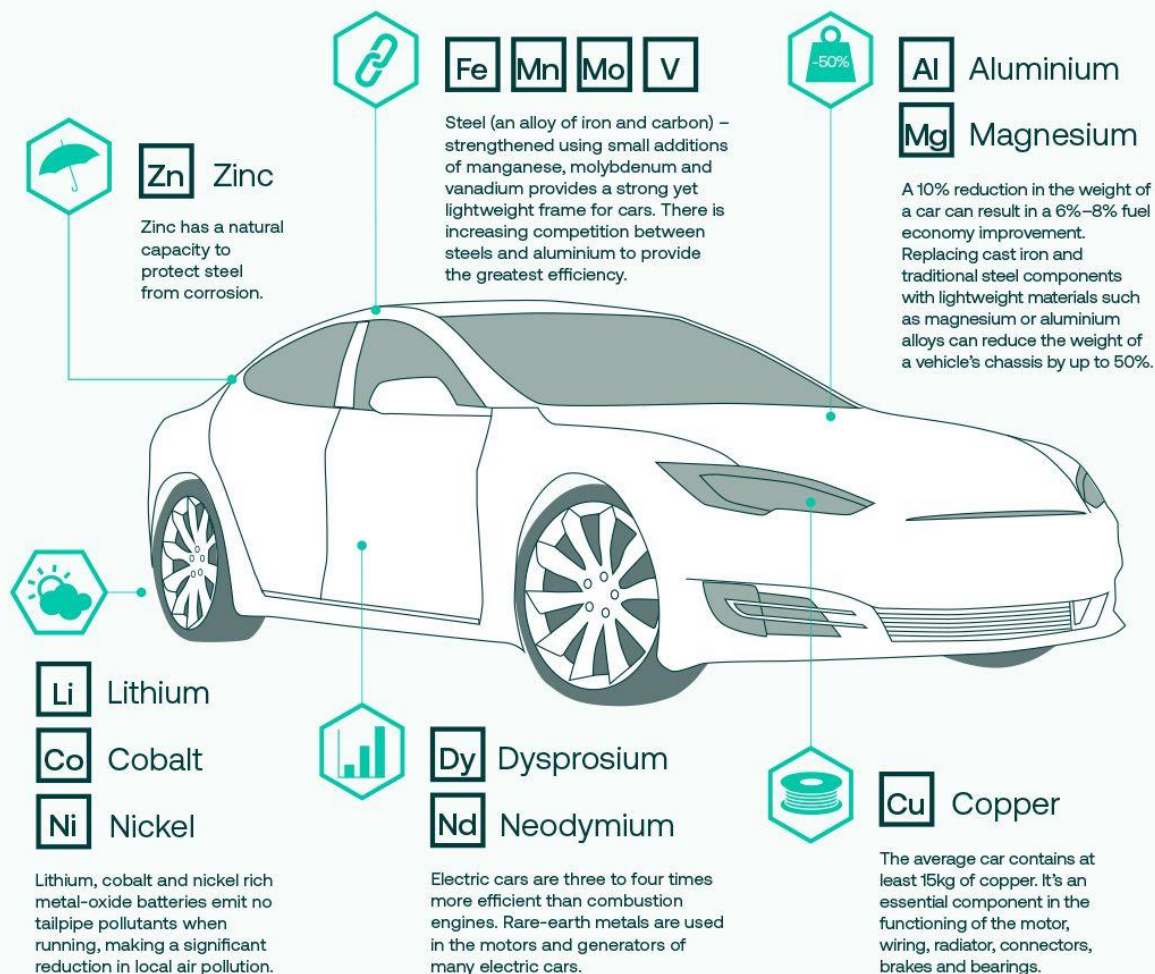
# Magnesium – Multiple Uses

- Magnesium is 33% lighter than aluminum and 75% lighter than steel
- Comparable strength to weight ratio to aluminum
- Used in vehicles and aircraft to reduce weight and increase strength
- Lighter vehicles and aircraft increase fuel efficiency
- Used in aerospace, military, and high technology products



# Magnesium Key for EVs

## Electric Cars



*A 10% reduction in the weight of a car can result in a 6%-8% fuel economy improvement ... magnesium or aluminum alloys can reduce the weight of a vehicle's chassis by up to 50%.*



# Game-Changer for Auto Manufacturing?

## Chinese scientists say supersized magnesium parts pave the way for cheaper, lighter cars

- Researchers in China produce giant car parts using technology similar to Tesla's 'gigacasting' – a process that has cut production times and costs
- Magnesium alloys could absorb impacts and offer advantages over more common aluminium-based materials, professor says



Zhang Tong in Beijing

+ FOLLOW

Published: 6:00am, 7 Jul, 2023 ▾

Why you can trust SCMP



# Magnesium – a promising candidate for rechargeable batteries

Staff Writer | February 16, 2023 | 5:04 am [Battery Metals](#) [Energy Asia](#) [Manganese](#) [Vanadium](#)

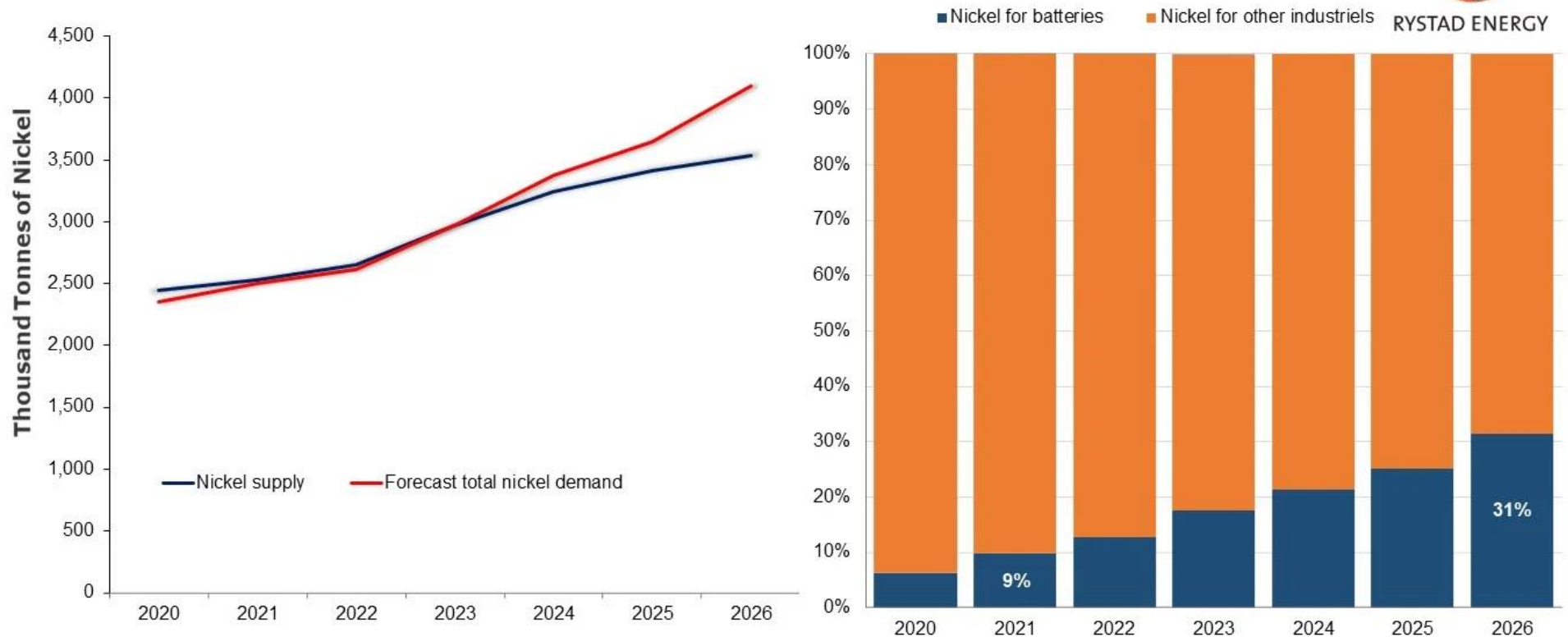


Idemoto said that through future research and development, magnesium batteries could surpass lithium-ion batteries thanks to the former's higher energy density.

The scientist pointed out that, in addition to the potential to realize higher battery capacities, magnesium is considered a promising candidate for rechargeable batteries because the metal is safer for battery chemistries than lithium and is more abundant.

# EV Battery Growth to Drive Nickel Market

Global nickel supply capacity and demand / Forecast global demand for nickel by end-use industry



Source: Rystad Energy BatteryMaterialsCube, Rystad Energy research and analysis

# Beaver-Lynx Magnesium-Nickel-Cobalt-Chromium Project

Major Critical Minerals Discovery in Tier 1 Jurisdiction





# Beaver-Lynx Project Highlights

- Targeting **multiple, bulk-tonnage**, magnesium-nickel deposits with chromium, cobalt and other metals
- N.I. 43-101 Technical Report completed in 2020 stating Beaver area hosts **large volumes of nickel**
- Major magnesium-nickel **drilling discovery** reported in 2022
- **Excellent infrastructure** (hydropower, railway, paved roads)
- **100% ownership** and no royalties
- Located in British Columbia, Canada a clean source of critical minerals

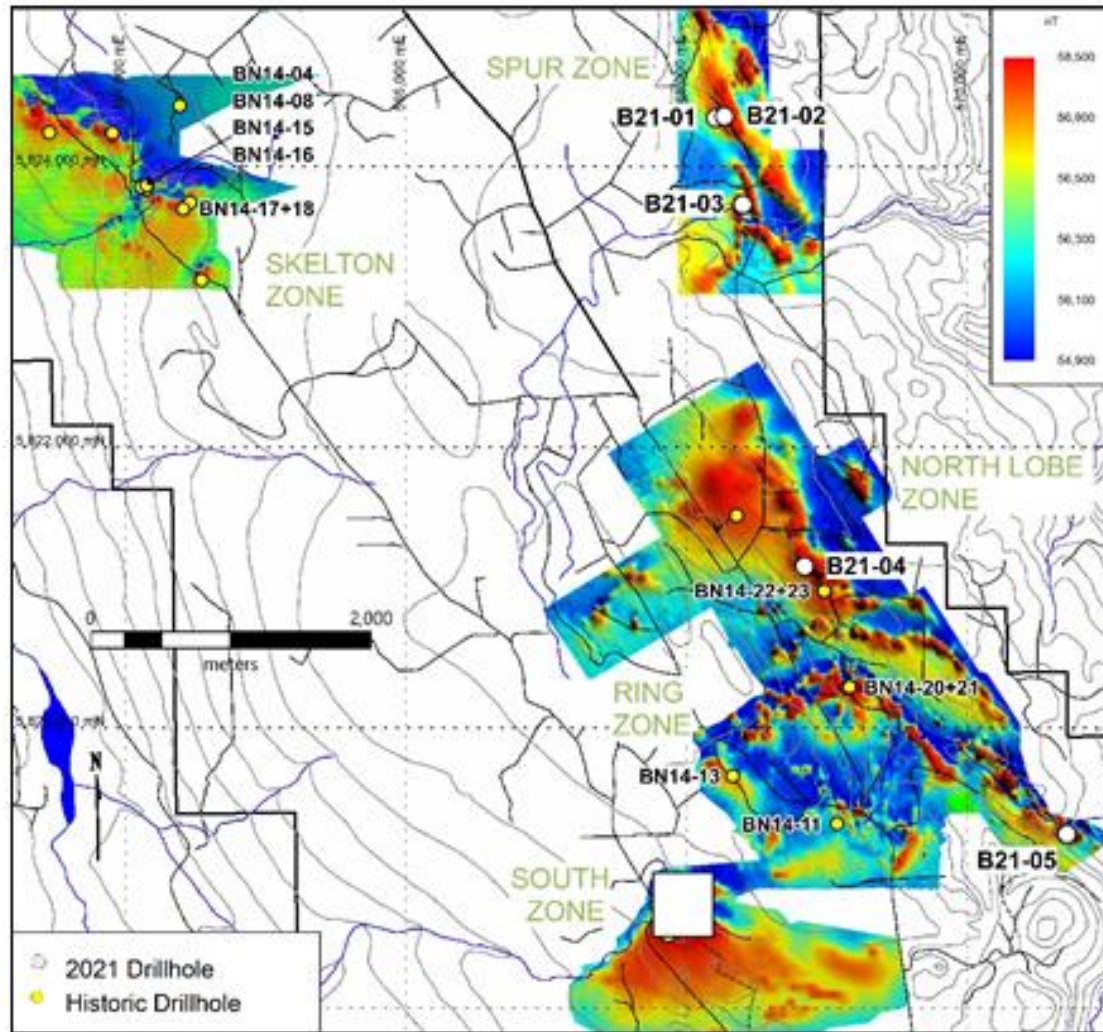
# Large Project in Tier 1 Jurisdiction



- Beaver-Lynx project is **~22,500 hectares**
- Located in south-central British Columbia, 15 km East of Gibraltar copper mine, **second largest open pit copper mine** in Canada
- Other nearby large polymetallic mines and deposits: Mount Polley and Woodjam (~25-35km East)
- Excellent infrastructure including **roads, railway, and hydropower**



# 2021 Exploration Programs – Beaver



Beaver Block Nickel Zones (TF Airborne Magnetics Background)

- 120 line-km ground magnetic survey at Spur and North Lobe zones completed in summer
- Five drill holes completed in autumn to test **large 6 km-long** Spur, Ring, and North Lobe areas

# Major Magnesium-Nickel Discovery

## Summary - 2021 Drilling on Beaver Property

Hole	From (m)	To (m)	Interval (m)	Magnesium %	Nickel % <sup>3</sup>	Chromium %	Cobalt %	Silver g/t	Copper %
B21-01 <sup>1</sup>	56.69	59.74	3.05	7.1	0.079	0.056	0.012	649	0.286
B21-02 <sup>2</sup>	40.54	292.61	252.07	20.6	0.164	0.327	0.099		
including	62.00	250.55	188.54	22.1	0.182	0.365	0.010		
including	185.93	243.84	57.91	22.4	0.201	0.039	0.010		
B21-03 <sup>2</sup>	9.14	184.40	175.26	21.0	0.178	0.362	0.093		
including	24.38	47.24	22.86	22.9	0.196	0.281	0.094		
and	61.57	184.10	122.53	22.4	0.191	0.304	0.097		
including	74.98	108.51	33.53	23.1	0.200	0.288	0.098		
including	119.48	156.06	36.58	22.5	0.194	0.309	0.095		
B21-04 <sup>2</sup>	27.43	91.44	64.01	11.8	0.097	0.151	0.057		
including	30.18	38.10	7.92	21.6	0.155	0.357	0.011		
and	72.85	91.44	18.59	23.6	0.192	0.289	0.011		
B21-05 <sup>2</sup>	21.34	100.58	79.25	19.3	0.141	0.340	0.098		
including	21.34	43.59	22.25	23.4	0.202	0.260	0.010		

**Note:** Entire mineralized zone average.

Table 1: Drill Summary (No attempt was made to correct for true thickness)

Notes:

<sup>1</sup> Drill hole terminated due to ground conditions.

<sup>2</sup> Entire mineralized zone average.

<sup>3</sup> Sulphide nickel (as opposed to total nickel).

**All drillholes ended in mineralization**



# Attractive Recoveries and Grade

- Excellent magnesium recoveries of 99% using HCl\*
- Nickel recoveries of 58% total nickel through floatation\*
- Gibraltar mine grades 0.27% Copper equivalent worth ~US\$25 tonne
- Magnesium at 20% grade is potentially worth ~US\$700 – \$1,200 tonne\*\*
- Nickel at 0.20% grade is potentially worth ~US\$50 tonne\*\*\*

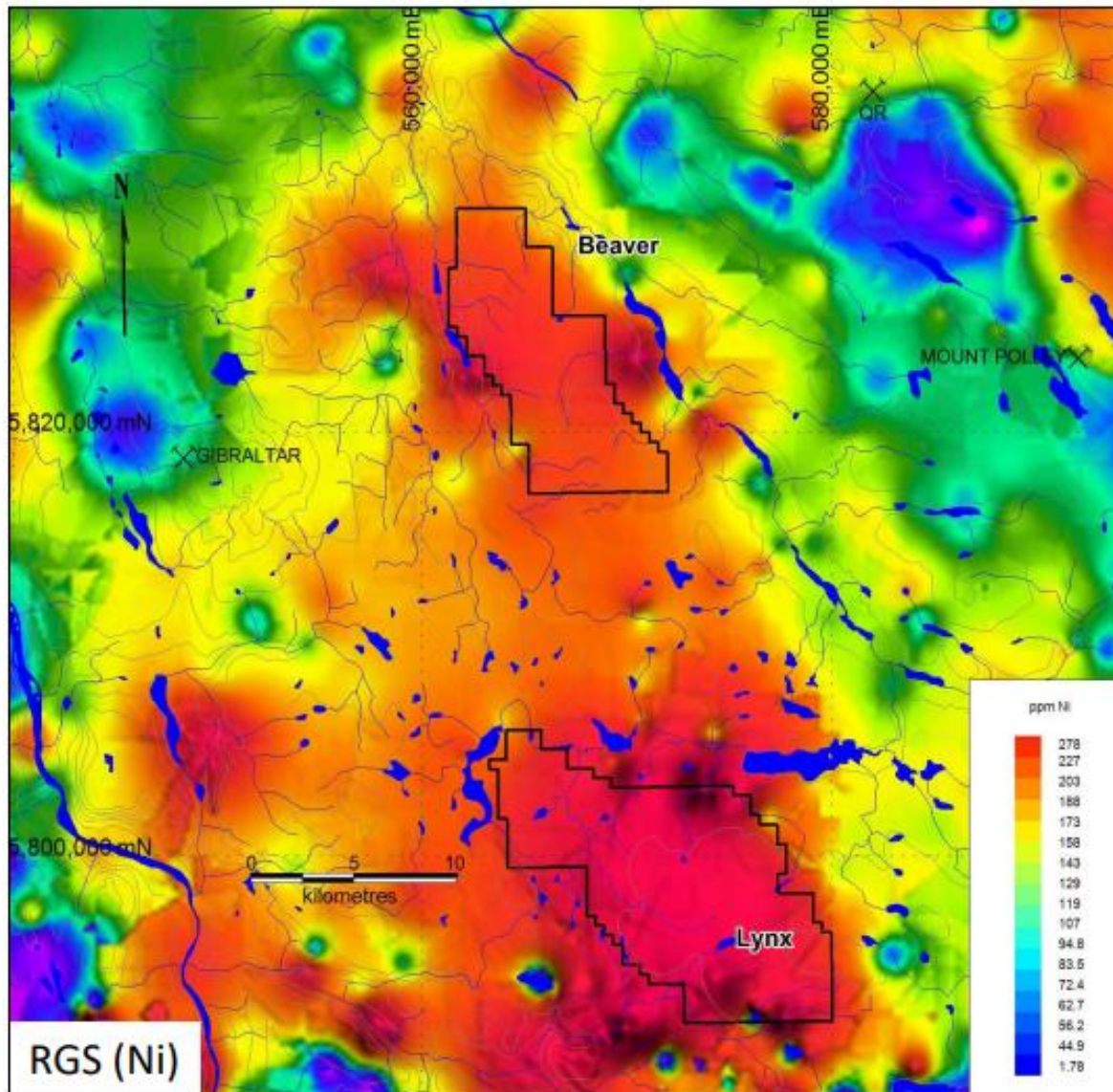
\* SGS Canada Inc. metallurgical tests. See January 19, 2023 news release.

\*\* Based on recent magnesium metal prices and other factors.

\*\*\* Based on recent nickel prices and other factors



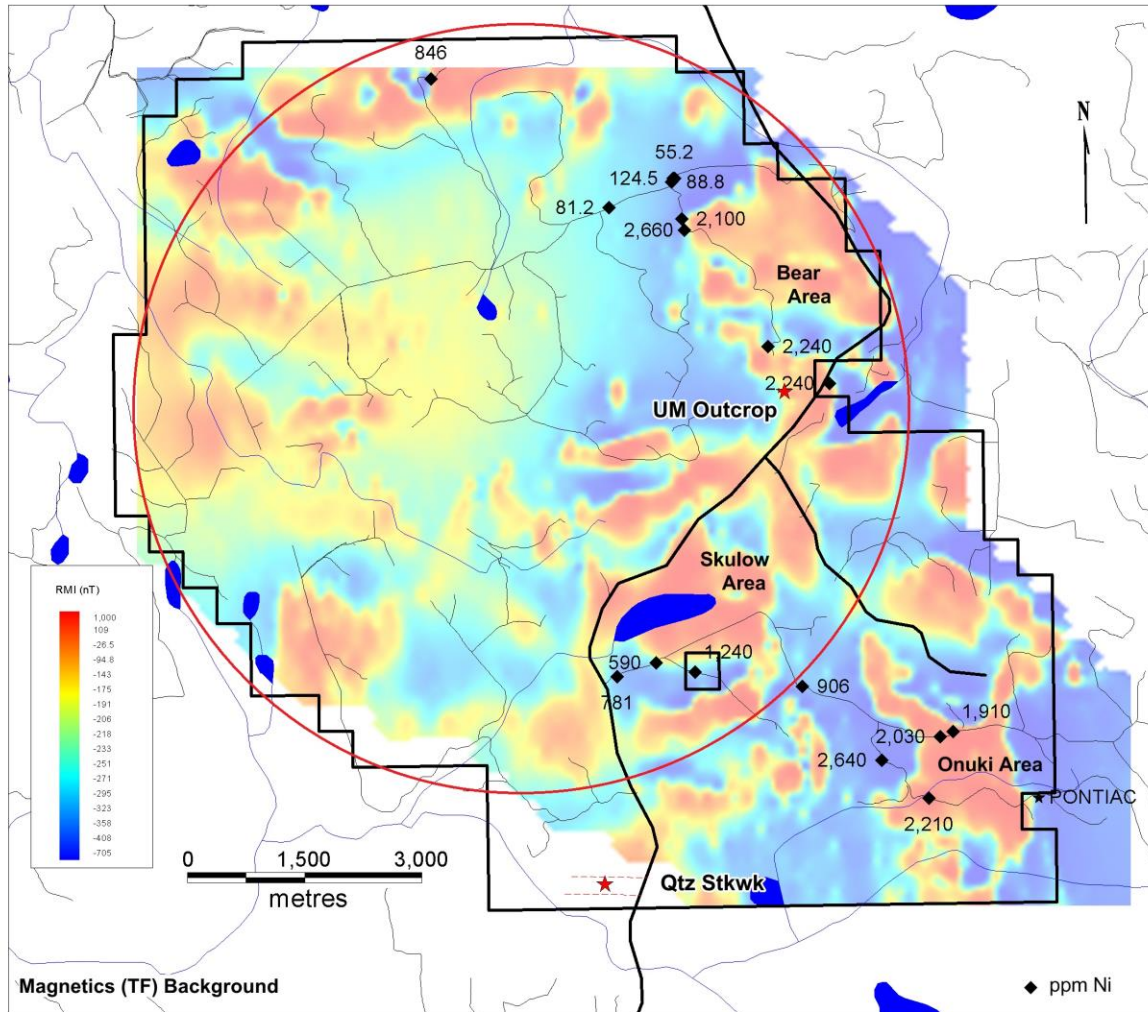
# Lynx Mineralization Greater than Beaver?



Regional stream sediment (RGS) data collected by provincial geologists illustrates the existence of a large 10 x 10 km nickel anomaly in Lynx area, amongst the highest in British Columbia.



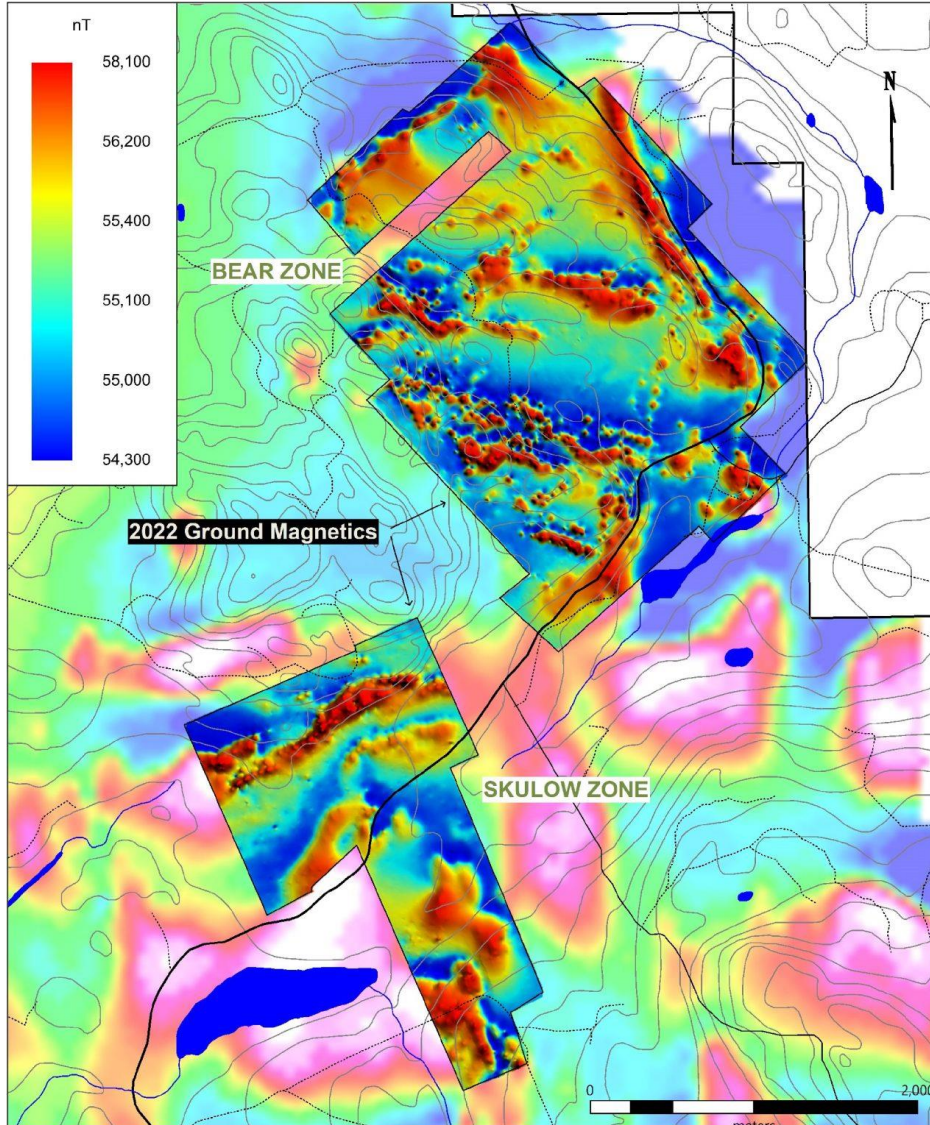
# Lynx Airborne Survey Identifies Anomalies



An airborne magnetics survey completed over Lynx delineated 8-kilometre-wide ring-like magnetic anomaly and several strong magnetic – anomalies – all greater than 2 kilometres in length – denoted as the Bear, Skulow, and Onuki areas.

These three areas were the focus of prospecting; of the 17 rock samples chipped from serpentinite outcroppings, 9 contained greater than 0.1% nickel with the highest grading sample containing 0.27% Ni.

# Lynx Ground Survey Delineates Multiple Targets



Left: Total Field ground-magnetic survey results (airborne TF magnetics background) over the Bear and Skulow zones, two of five main mineral exploration targets on the Lynx property.

The strong magnetic bodies delineated by the 2022 survey form both linear as well as broad circular anomalous areas. The linear features are likely indicative of thrust planes created during the subduction of the lower crust forming wedges near the mantle.

Broad circular features, typically 3 – 6 km<sup>2</sup>, likely signify hot spots or mud volcanoes formed by the crust's proximity to the mantle. See [April 19, 2022 news release](#) for more information.

Drilling will test targets for critical minerals similar to magnesium-nickel-chromium-cobalt discovered at Beaver.



# Investments in CDN Critical Minerals Projects

Targeting bulk-tonnage, sulphide nickel and other metals, as well as carbon capture opportunities

- \$24 million investment by Anglo American (Feb 2023) in Canada Nickel
- \$8 million investment by Mitsubishi Corporation (Aug 2022) in Giga Metals

Canada Nickel Company	Giga Metals
0.24%	0.21%
Canada	Canada



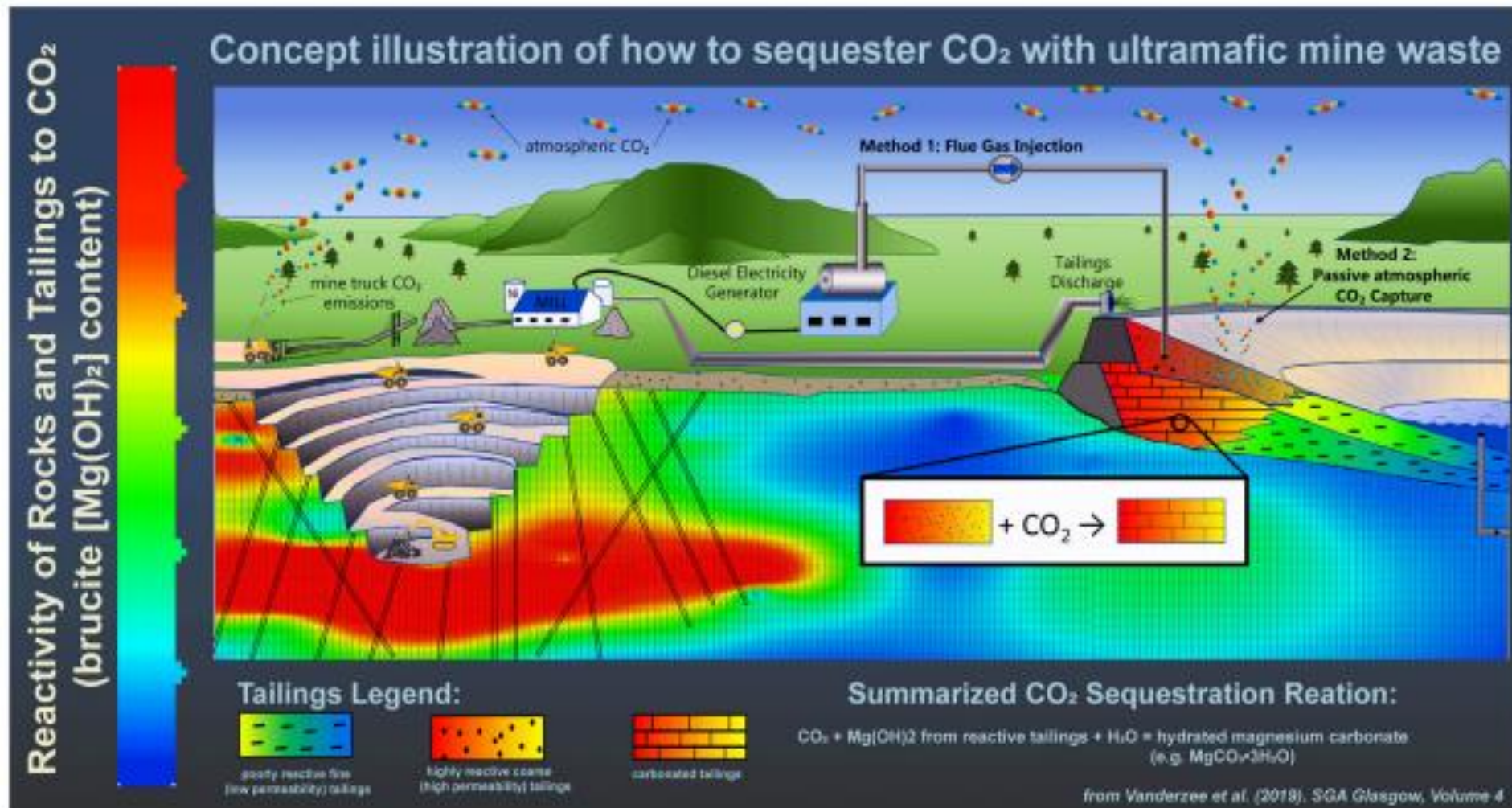
# Carbon Capture and Storage (CC&S) Potential

- Ultramafic rocks with high magnesium content are among the largest CO<sub>2</sub> storage reservoirs on Earth
- Preliminary testing of Beaver samples by researchers at the University of British Columbia (UBC) demonstrated Beaver's potential for CC&S
- Beaver samples contain **magnesium-rich minerals such as brucite and hydrotalcite group minerals** that react quickly with CO<sub>2</sub> in the atmosphere
- Beaver tailings are good candidates for CO<sub>2</sub> capture and storage using techniques developed by UBC being commercialized by Arca
- A substantial reduction in greenhouse gas emissions could enable mines to become carbon neutral and lower operating costs.

# Magnesium Key to Carbon Capture



# Carbon Capture in Mining





# Gold and Silver Projects in Mexico

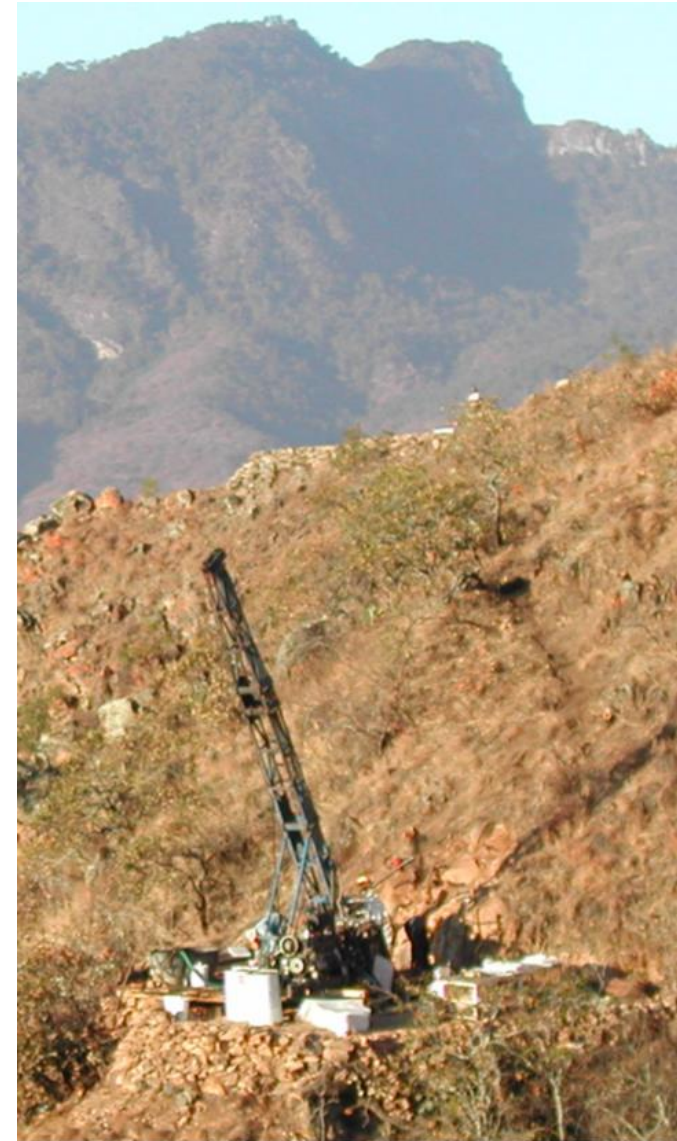
Drilling at La Gitana among visible mineralized outcrop





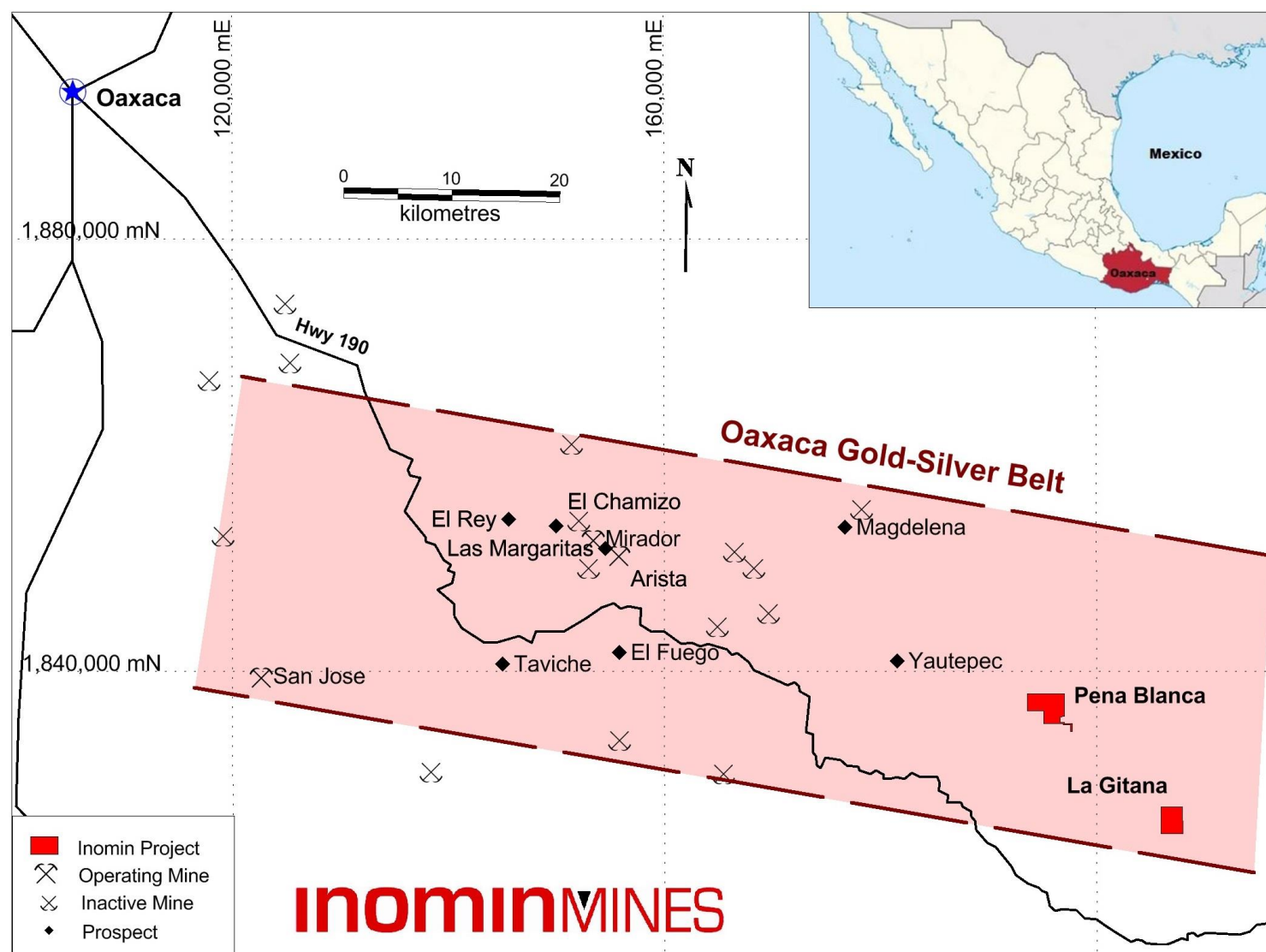
# Advanced Gold-Silver Opportunities

- **La Gitana and Pena Blanca** gold-silver properties in Mexico
- La Gitana is an **advanced-stage** epithermal gold-silver exploration project formerly owned by **Chesapeake Gold** and **Goldcorp**
- NI 43-101 technical report confirms La Gitana hosts a **significant gold-silver deposit**
- Drill results include **133.5 meters (438 feet) grading 1.78 g/t gold and 100.7 g/t silver**
- Initial La Gitana drilling of **38 holes** delineated gold-silver system open to expansion



# Projects Located in Prolific Gold-Silver Belt

Oaxaca Gold-Silver Belt hosts several operating mines and prospects



- **Fortuna Silver** operates San Jose gold-silver mine



**FORTUNA**  
SILVER MINES INC.

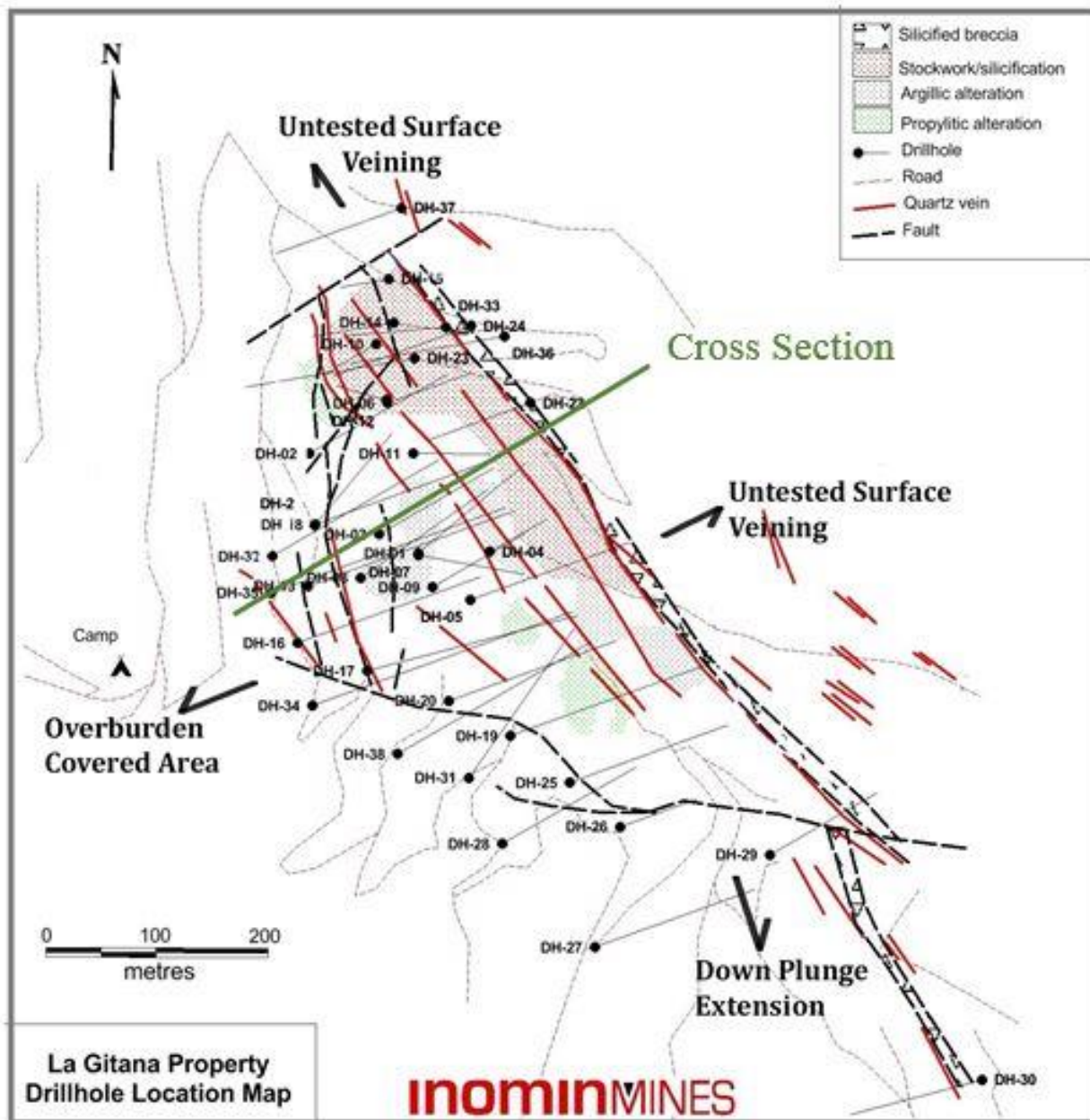
- **Gold Resource** operates Arista and Mirador gold-silver mines



**GOLD RESOURCE**  
CORPORATION

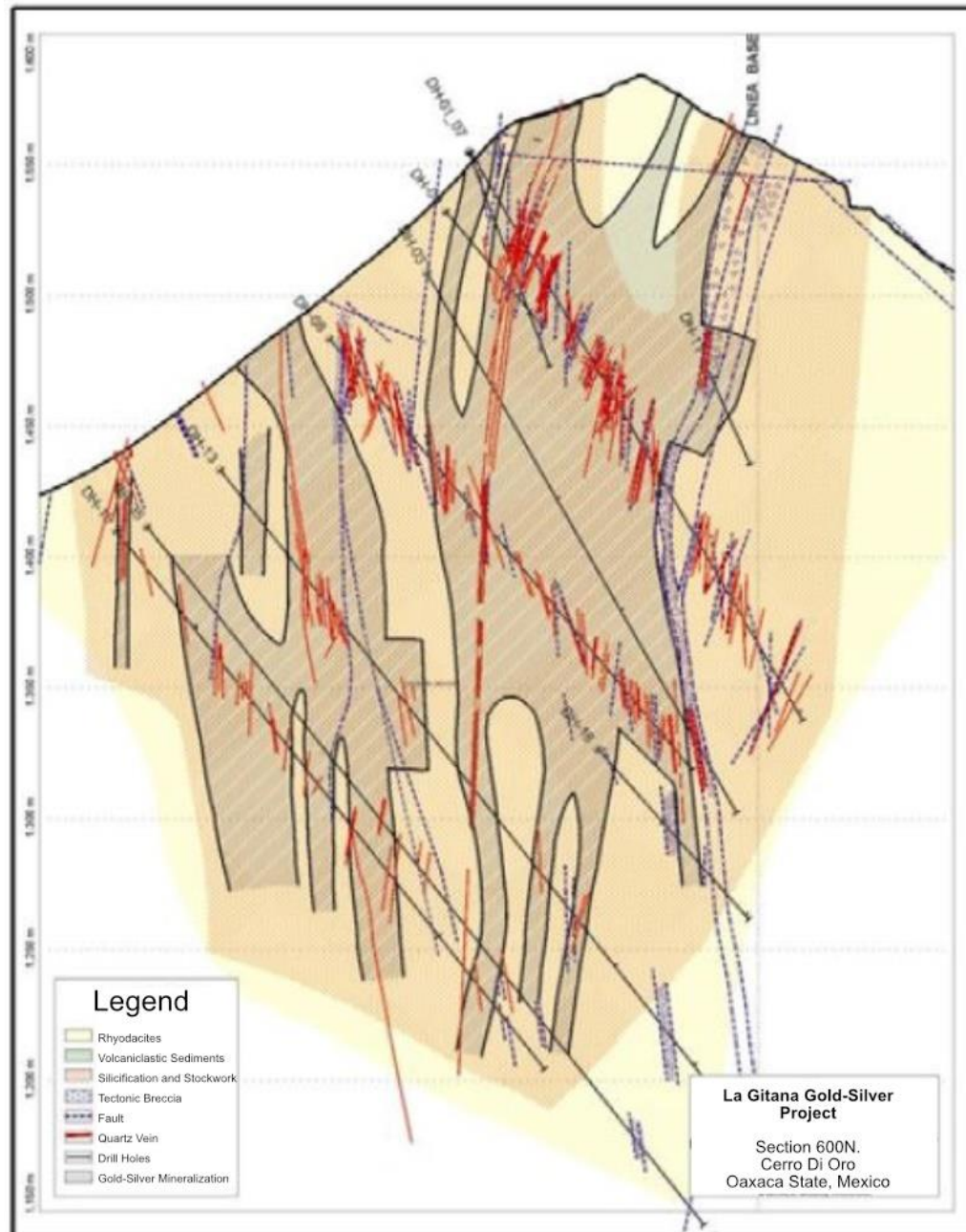


# La Gitana Drilling Finds Significant Gold & Silver



- First drill hole (DH-1) intersects **133.5 meters (438 feet)** grading **1.78 g/t gold** and **100.7 g/t silver**
- 38 drill holes confirm Cerro Di Oro zone discovery
- Open to expansion along strike SE and at depth as well as untested areas East and West

# Mountain of Gold & Silver



- Disseminated and high-grade gold and silver
- Near-surface mineralization, prospective for surface and underground deposits



Drill core from Cerro Di Oro zone showing quartz stockwork.

# Notable Drill Results – La Gitana Property

Hole	From (metres)	To (metres)	Interval (metres)	Gold (g/t)	Silver (g/t)	High-Grading Gold Interval
DH-01	21.0	154.5	133.5	1.78	100.7	27.8 g/t Au over 1.5 m
DH-03	39.0	72.0	33.0	0.64	39.2	3.27 g/t Au over 1.5 m
DH-04	0.0	33.0	33.0	0.65	1.6	2.4 g/t Au over 1.5 m
DH-06	0.0	124.5	124.5	0.75	24.0	6.76 g/t Au over 1.5 m
DH-07	0.0	64.5	64.5	0.72	22.2	5.65 g/t Au over 1.5 m
DH-08	67.5	213.0	145.5	0.40	32.8	3.59 Au over 1.5 m
DH-09	12.0	105.0	93.0	0.99	19.4	8.53 g/t Au over 1.5 m
DH-10	1.5	64.5	63.0	1.27	70.0	8.61 g/t Au over 1.5 m
DH-11	0.0	90.0	90.0	0.51	15.7	2.15 g/t Au over 1.5 m
DH-12	1.5	94.5	93.0	0.56	20.0	4.06 g/t Au over 1.5 m
DH-13	150.0	163.5	13.5	1.30	60.2	8.94 g/t Au over 1.5 m
DH-14	3.0	63.0	60.0	1.20	31.2	16.77 g/t Au over 3.0 m
DH-15	0.0	10.5	10.5	0.62	41.3	0.97 g/t over 1.5 m
DH-18	30.0	102	72.0	0.75	34.7	8.19 g/t Au over 3.0 m
DH-20	36.0	43.5	7.5	6.00	281.6	13.28 g/t Au over 3.0 m
DH-22	6.0	87.0	81.0	0.31	19.8	1.19 g/t Au over 1.5 m
DH-24	103.5	132.0	28.5	1.55	83.8	10.15 g/t Au over 1.5 m
DH-38	126.0	177.0	51.0	0.81	19.9	13.35 g/t Au over 1.5 m

Note all grade intersections reported in above table are core interval lengths and not true thicknesses. All drill core was HQ and NQ sized. Core sampling was completed on half core segments over 1.5 to 3.0 metre (m) intervals. All drill core samples were sent for preparation to ALS Chemex laboratory in Guadalajara, Mexico; prepared samples sent to ALS Chemex laboratory in Vancouver, Canada for analyses for gold by fire assay and for multi-element by 4-acid digestion ICP.



# La Gitana Report Recommendation

*Using the existing information and results of the core drilling carried out in the Cerro Di Oro zone by Chesapeake Gold Corp., it is recommended to initiate a resource estimation.”*

# Chesapeake Gold Technical Report



# Pena Blanca Gold and Silver Project

- Located 15 kms NW of La Gitana
- Prospective for large-tonnage, near-surface, gold and silver deposits
- Mineralization covers 9 km<sup>2</sup> of hydrothermal alteration; less than 1 km<sup>2</sup> explored



Massive mineralized outcrop at Pena Blanca.

# Team

## **John Gomez** President and CEO

Mr. Gomez is an entrepreneur that has founded and managed private enterprises in mining, technology, and sports. Prior to being a founder of Inomin, Mr. Gomez founded and was president of a private gold exploration company in Colombia. Under his leadership, the company acquired strategic land and mining interests in some of the country's top gold districts. Mr. Gomez also founded and was President of U3O8 Media Inc. a leading news provider for investors on the uranium market. The U3O8.biz model was used to establish the [Investing News Network](#). His consulting company, Oro Grande Capital Inc., provides marketing, corporate development and funding services to select public and private companies. Mr. Gomez has a Bachelor of Arts degree from the University of Victoria.

## **Ari M. Shack** Corporate Secretary and Director

Mr. Shack has practiced throughout his career as a commercial solicitor advising both public and private companies. Mr. Shack has extensive experience advising clients in relation to day-to-day commercial transactions and operations. In addition, Mr. Shack has experience advising private and public companies on corporate finance matters, including securities issuances and secured lending. Mr. Shack also assists clients with corporate structuring and reorganizations, including transactions involving amalgamations, continuations, dissolutions and tax motivated transactions. Ari is qualified to practice law in British Columbia and holds both a Bachelor of Commerce degree (1993) and a Bachelor of Laws degree (1997).

## **Anil Jiwani** Chief Financial Officer and Director

Mr. Jiwani CPA, CA, has more than 15 years of financial reporting experience with publicly listed companies. He is Chief Operating Officer of Avisar Everyday Solutions Ltd., a company that provides a wide range of financial services to growing businesses.

## **Gustavo Allende Igarashi** Head of Corporate Development – Mexico

Mr. Allende Igarashi is a metallurgist and industrial engineer with 35 years of mining management experience in Mexico's public and private sectors. Mr. Allende recently served (2017 – 2021) as Director of Industry and Mining for the State of Oaxaca, Mexico where he headed investment programs, development activities, and Government affairs for the State's industry and mining sectors. In the private sector Mr. Allende was Superintendent at Gold Resource's (NYSE: GORO) flagship El Aguila polymetallic (gold-silver-copper-lead-zinc) project in Oaxaca. At El Aguila he was a key member that developed the project into a successful mining operation.



## **John Peters** Director

Mr. Peters, P.Geo, has over 30 years of experience in the mining industry. He is currently a geological consultant for junior mining companies including Westhaven Ventures Inc, Commander Resources Ltd, and Fjordland Exploration Inc. Following four years as mine geologist for Homestake Canada, he spent 25 years as Exploration Manager for over ten junior companies with projects located across Canada, West Africa, South America, United States, and Greenland. He has also acted as project manager during joint ventures with Sumitomo Mining, Capstone Mining, and Gold Fields Canada. Notable discoveries in British Columbia, Canada Mr. Peters has been involved with include the Woodjam porphyry copper-gold deposit, the Shovelnose gold discovery, and the Beaver-Lynx nickel discoveries.

## **Bill Yeomans** Director

Mr. Yeomans, P.Geo, is a gold exploration professional with over 36 years experience in all stages of gold exploration throughout the Americas. He gained extensive exploration management experience across the entire Guiana Shield of South America with BHP, along with several junior mining companies. Mr. Yeomans has worked as a senior exploration manager throughout all the major gold mining camps in Canada. He has generated projects which resulted in significant NI 43-101 compliant gold resources on three different projects including the Duquense-Ottoman gold project in Quebec. Mr. Yeomans has worked as a consultant to IAMGOLD and Dundee Precious Metals, evaluating advanced gold projects across Canada, western USA and Alaska. He obtained his HBS. in Geological Sciences from Queen's University in 1982.

## **Victor Jaramillo** Advisor

Mr. Jaramillo, M.Sc., P.Geo, is an international geological consultant with over 30 years of experience in the mining industry. Mr. Jaramillo has worked for major and junior mining companies as senior project geologist, technical director, chief mine geologist and exploration and mine manager. His work has included regional exploration, property assessment, resource estimation and mine operations. He has worked in Canada, the United States and Latin America. Most of his experience in the last 25 years has been focused on precious metal deposits. Mr. Jaramillo was directly responsible for the discovery of the Langosta porphyry copper-gold deposit in Mexico, and the discovery of the Las Lomas porphyry copper-gold deposit in Peru. He holds an M.Sc.A. degree in Mineral Exploration from McGill University and a B.Sc. degree in geology from Washington & Lee University.

## **Bruce Winfield** Advisor

Mr. Winfield, M.Sc., P.Geo, has more than 40 years of experience in the minerals industry as a geologist, corporate executive and consultant. Following 14 years with major mining companies Texasgulf Inc. and Boliden Inc., he held the position of VP Exploration for Greenstone Resources and Eldorado Gold Corporation leading to the exploration and development of five gold deposits. Subsequently as President and or CEO he has led companies exploring primarily in South America for the last twenty years.

# Share Structure

As of July 11, 2023

Shares Out:	38,213,552
Warrants:	8,634,692
Options:	3,475,000
Fully Diluted:	50,323,244

Listing: TSX Venture Exchange  
Trading Symbol: **MINE**



# Another Opportunity



History may not repeat  
but tends to rhyme

Inomin's share price increased **10-fold** in March 2022 on Beaver drilling discovery.



# Forward-Looking Growth Catalysts

- Beaver drilling results from summer 2023 exploration
- Further drilling at Beaver-Lynx to expand discoveries
- Acquisition of other attractive project opportunity
- Work agreement for La Gitana gold-silver project
- Strong growth in EV and critical minerals markets
- Rerating potential based on one or more above catalysts

# Further Information

**John Gomez**

President

Tel. +1.604.643.1280

Email: [info@inominmines.com](mailto:info@inominmines.com)

 [@InominMines](https://twitter.com/InominMines)

[www.inominmines.com](http://www.inominmines.com)



**Be first to know. Subscribe to MINE news:**



**inominMINES**  
TSX.V-MINE

Acquire | Explore | **Enrich Stakeholders**